

# Suite 1 - 422 Saint Mary's Street - Raleigh, NC



## Location: Glenwood South

Ideal location - Near Downtown Raleigh | Cameron village | Capital Boulevard | NC State University | Wade Avenue - all within minutes.

**Lobby:** 17' X 10' Lobby with Sofa, Chair, Credenza, and Mirror, Offering direct access to Suite #1. The decor is impressive with 12' ceilings, and attractive furniture.

**Suite #1:** 18' X 12' Impressive office with 12' ceilings, attractive track lighting, decorative windows with customized blinds, honey trim, and tile surround baseboards.

**Glenwood South - Ideal Location - Near Cameron Village - Downtown Raleigh - NC State University**

**Available November 1, 2020 | Monthly Rent - \$475.00 Month**

Please Visit Our Website: [www.jansenproperties.com](http://www.jansenproperties.com) for details

## DESCRIPTION:

If you are looking for a One or Two person office, or looking to move out of your Home Office and desire to have a quiet and beautiful office space, with convenience and privacy, this Professional Office Space located in Glenwood South is the perfect place for a Consultant, Sales, Therapist, or other Small Business use. This office is ideal for a Solo Professional or Small Business Owner who wants a Quiet Administrative Office for working and occasional meetings. This is an exceptional office with all utilities (electric, water) paid, and includes free parking and high speed internet - Ethernet port and wireless.

## RENTAL FEATURES:

- Elegant 18' X 12' Office with 12' ceilings, track lighting, 5 windows with custom blinds.
- Beautiful 10' X 17' Lobby (Sofa, Chair, Credenza, and Mirror) with direct access to Suite #1.
- Entry door is honey colored trim wood with a decorative non see-through beveled glass.
- Customized vertical columns form archway to separate into 2 offices.
- Mirrored wall displays high quality and appearance.
- Beautiful windows with honey colored trim wood.
- Decorative black and white tile squares around baseboards.

**Utilities Paid - Off Street Parking - High Speed Internet - Direct Port and Wireless.**

**Quiet Surroundings - Distinctive Professional Appeal - Luxurious Office Space.**

## LOCATION FEATURES:

- \* Attractive Lobby.
- \* Private Entry Door To Office.
- \* Central Heat and Air for Year Round Comfort.
- \* Very Good Acoustics / Soundproofing.

**LEASE TERM:** One Year Standard Commercial Lease - \$475.00. Monthly Rent. See Our Website: [www.jansenproperties.com](http://www.jansenproperties.com).

## INFORMATION

### CONTACT INFORMATION

Paul Jansen  
[pjansen@jansenproperties.com](mailto:pjansen@jansenproperties.com)  
Day - 919-833-7142  
Evening - 919-783-9410

### PRICING

Utilities Included: Yes

### PROPERTY LOCATION

422 Saint Mary's Street  
Raleigh, NC 27605

## PHOTO GALLERY



# Photo Gallery



422 Saint Mary's Street - Office Building



17' X 10' Lobby with Attractive Furniture



Suite 1 - 18' X 12' Office With Track Ligh...



Side Of The Building From Tucker Street



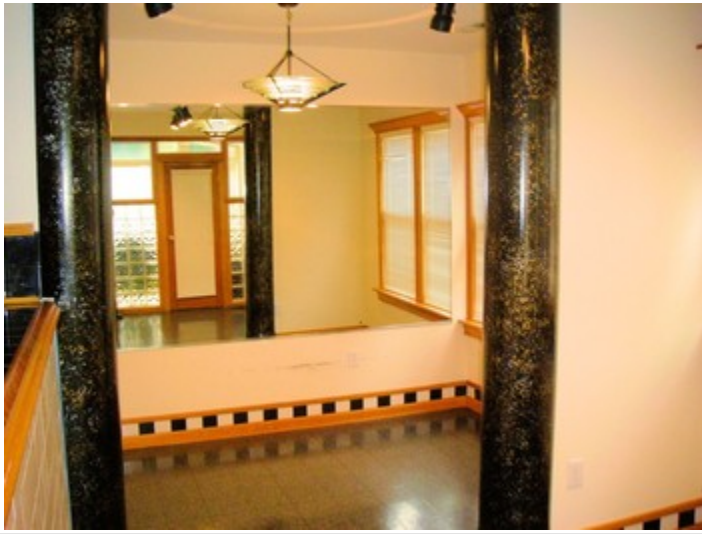
Another View Of Side Of The Building



View Of Door Connecting To Lobby

PAUL JANSEN | DAY - 919-833-7142 | [PJANSEN@JANSENPROPERTIES.COM](mailto:PJANSEN@JANSENPROPERTIES.COM)

# Photo Gallery



Suite 1 - View Of Mirrored Wall



Front Left Side Of The Building



Front Left Corner Of The Building



Lobby - Suite 1 Entry Door With Beveled Gl...



Suite 1 - Another View Showing The Windows



View Of Left Corner Of Building

PAUL JANSEN | DAY - 919-833-7142 | [PJANSEN@JANSENPROPERTIES.COM](mailto:PJANSEN@JANSENPROPERTIES.COM)

# Photo Gallery



View Of Left Corner And Rear Of building



17" X 10' Lobby With Credenza



Suite 1 Entry Door From Lobby



Rear View Of Building With Parking Spaces



Rear View of Upper and Lower Rear Entry Do...



Another View Of Beveled Glass Entry Door

PAUL JANSEN | DAY - 919-833-7142 | [PJANSEN@JANSENPROPERTIES.COM](mailto:PJANSEN@JANSENPROPERTIES.COM)

# Photo Gallery



View Of Sofa And Mirror In The Lobby



Upper Rear Entry Door



View Of Building From Saint Mary's Street



View Of Front Entry Door To Lobby



Entry Hall With Office Doors Open



Another View Of Rear Of Building

PAUL JANSEN | DAY - 919-833-7142 | [PJANSEN@JANSENPROPERTIES.COM](mailto:PJANSEN@JANSENPROPERTIES.COM)

POWERED BY VFLYER.COM

VFLYER ID: 234023000

All information in this site is deemed reliable but is not guaranteed and is subject to change

## Photo Gallery



View Of Rear Of Building And Sidewalk



Entry Hall With Office Doors Closed



View Of Lobby - With Door To Office Hallwa...



View Of 422 Saint Mary's Street Office Bui...

PAUL JANSEN | DAY - 919-833-7142 | [PJANSEN@JANSENPROPERTIES.COM](mailto:PJANSEN@JANSENPROPERTIES.COM)

POWERED BY VFLYER.COM

VFLYER ID: 234023000

All information in this site is deemed reliable but is not guaranteed and is subject to change