

# Suite 6 - 422 Saint Mary's Street - Raleigh, NC



**Location:** Raleigh, NC

**Glenwood South:** Ideal Location | Near Downtown Raleigh | Cameron Village | Capital Boulevard | NC State University | Wade Avenue - all within minutes.

If you are looking for a One or Two person office, or looking to move out of your home office and desire to have a quiet and beautiful office space, with convenience and privacy, this Professional Office Space located in Glenwood South is the perfect space for a Consultant, Sales, or other Small Business Use.

This is an Attractive Office Building with private entrance from street (red side door) - directly into this Elegant 2 Suite Executive Office Space.

2 Luxurious Offices with Private Entrance, 12' Ceilings, Built in Bookshelves, Optional Internet available at a cost savings. Enjoy the contentment of quiet, year round temperature comfort without compromise.

## RENTAL FEATURES:

- Elegant 2 Suite Office for Business' needing Executive Office Suites in a quiet environment.
- Features 10' X 14' and 9' X 12' private offices with adjoining door.
- Off street Parking - Direct Entry from Street into 2 Private Offices.
- Internet hard wired direct to each office with optional participation with cost discount.
- Private bathroom with sink, vanity, mirror, commode.
- Built in bookshelves floor to ceiling.
- Attractive 12' ceilings.
- Three vinyl windows adding temperature comfort with distinctive trim.
- Enjoy Mitsubishi year round temperature comfort quiet as a whisper.
- Rent includes all utilities paid and free parking spaces.

## LOCATION FEATURES:

- Private Entry Door to Office from Street with off street parking. See Red Side Entry Door.
- Central Heat and Air plus Mitsubishi 12,000 BTU Unit in Office 6 for year round comfort.
- Luxurious Office Space with Very Good Acoustics - Soundproofing.
- Distinctive Professional Appeal.

## LEASE TERM:

**Available July 1, 2016 - Standard One Year Commercial Lease.**

**Monthly Rent: Available Upon Request**

## INFORMATION

### CONTACT INFORMATION

**Paul Jansen**  
**919-833-7142**

### PRICING

**Minimum Lease: 1 Year**  
**Utilities Included: Yes**

### PROPERTY LOCATION

**422 Saint Mary's Street**  
**Raleigh, NC 27605**

## ATTRIBUTES

### BUILDING AMENITIES

- Free Parking
- Near Downtown
- Private Entrance
- Comfortable Temp.
- Utilities Included
- Excellent Security

### OFFICE AMENITIES

- Private Bathroom
- 2 Private Offices
- Optional Internet
- 12' Ceilings
- Great Acoustics
- Built in Bookshelves

## PHOTO GALLERY



# Photo Gallery



422 Saint Mary's Street



Office 1



Private Bathroom in 2 Suite Office



Side of Building - Entry Door to Suite 6



Side of Building facing Tucker Street



Built in Bookshelves with 12' Ceilings

PAUL JANSEN | 919-833-7142

# Photo Gallery



Office 1 - Private Entry Door From Street



Front Corner of Building - Suite 6 Entry ...



Side of Building



View of Office 1 from Office 2



Office 2 - Additional Mitsibitshi HVAC U...



View of Entry Door to Suite 6

PAUL JANSEN | 919-833-7142

# Photo Gallery



Entry Door To Suite 6 - Front Side of Buil...



View of Office 1 from Office 2



Office 1 with Private Entrance



Rear View of Building



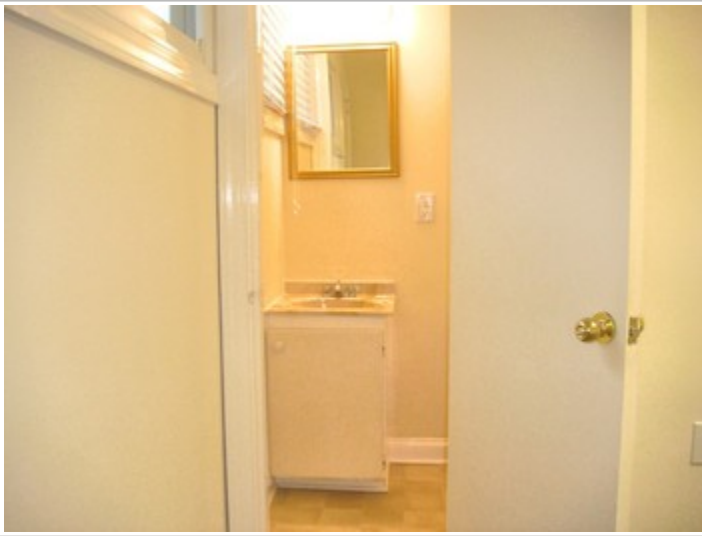
Private Entry Door to Suite 6



View of Office 2

PAUL JANSEN | 919-833-7142

# Photo Gallery



Another View of Private Bathroom



Side of Building facing Tucker Street



Front Corner of Building



Office 1 with Door Open to Office 2



Office 1 - Vinyl Windows



Private Entry Door to Suite 6

PAUL JANSEN | 919-833-7142